

# Gortite® X-Y Face Shield

Gortite X-Y Face Shield Assemblies are multi-axis covers for machine tools or any other application needing multi-axis protection. Vertical (side or wall) or horizontal (ceiling or floor) applications in many different environments, including industrial and pharmaceutical, are just some of the many possibilities for this application.

Depending upon your application, Gortite X-Y Face shields can utilize a number of different methods for each axis. Stainless steel shade, elastomer coated belting or Steelflex® can be used in conjunction with a spring roller. Gordillo (bellows with steel plate) or sliding steel plates can be used instead of a roller. The spindle can use a custom cutout, molded wiper and/or a bellows. Multiple Roll-Up covers or sliding plates cover the main two axis, while a ram wiper or bellows can be used for a third axis.

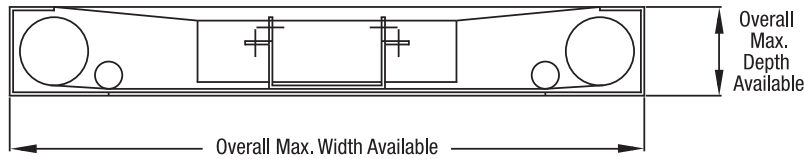
- Supplied fully-assembled or in kit form with operating and maintenance instructions
- Designed with ease of installation and longevity in mind
- Can be supplied painted to meet current industry standards
- Wipers to clean debris and fluids from the surface of the shade
- Mounting arrangement to suit the customer's needs
- Speeds of 3000 in/minute (76 m/min) or more
- Accelerations up to 1g or more



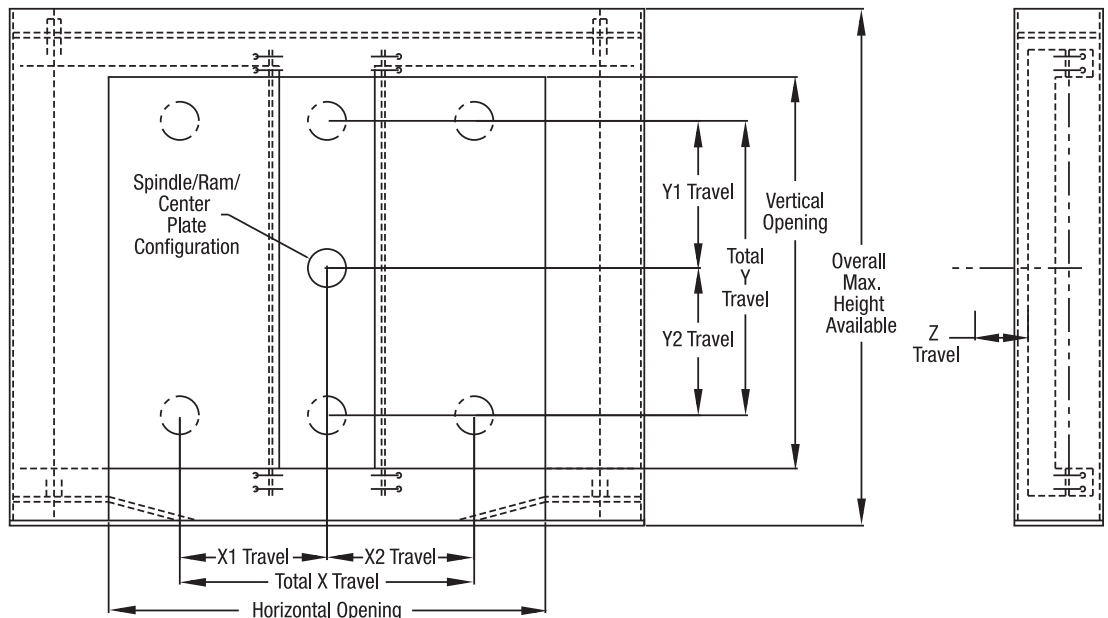
Variety of X-axis side wipers are available:

- Felt
- UHMW
- Brush
- Molded Polyurethane

(SHOWN SHADEROLLER FACE SHIELD)



Y-axis sides can be capped to increase the sealing capabilities.



# How to Order Gortite® X-Y Face Shield

Date: \_\_\_\_\_ For Quotation Only: \_\_\_\_\_ Address: \_\_\_\_\_  
Order Number: \_\_\_\_\_  
Company Name: \_\_\_\_\_ City: \_\_\_\_\_ State/Prov. \_\_\_\_\_  
Contact: \_\_\_\_\_ Country: \_\_\_\_\_ Zip/Postal Code: \_\_\_\_\_  
Quantity of covers needed: \_\_\_\_\_ Telephone: \_\_\_\_\_ Fax: \_\_\_\_\_  
E-Mail: \_\_\_\_\_

**Please supply a sketch/drawing/CAD file (DWG or DXF file format)/photo of your application**

## 1. Application

OEM  End User

What will the component frames attach to (column, base etc.)? \_\_\_\_\_

What will the center plate in the Y-Axis attach to? \_\_\_\_\_

Temperature: Ambient \_\_\_\_\_ Minimum \_\_\_\_\_ Maximum \_\_\_\_\_

### External Environment

Type of environment the Face Shield will be subjected to:

Dry  Abrasive particles (Dirt, dust, sand, grit, etc.)  Aluminum  
 Weld Splatter  Light  Medium  Heavy  Hot Chip  
 Other (please describe) \_\_\_\_\_

Type of fluid the Face Shield will be subjected to:

Cutting Oils/Coolants/Lubricants (Type) \_\_\_\_\_  
 Chemicals (Type) \_\_\_\_\_  
 Water/Moisture  
 Other (please describe) \_\_\_\_\_

If there will be fluids in the shield area, is drainage required? \_\_\_\_\_

Machine cycles per day: \_\_\_\_\_

Maximum Speed (in./min.): \_\_\_\_\_

Acceleration: \_\_\_\_\_

## 2. Dimensions (Please specify in inches)

X1 Travel = \_\_\_\_\_

X2 Travel = \_\_\_\_\_

**Total X Travel (X1 + X2) = \_\_\_\_\_**

Y1 Travel = \_\_\_\_\_

Y2 Travel = \_\_\_\_\_

**Total Y Travel (Y1 + Y2) = \_\_\_\_\_**

Z Travel = \_\_\_\_\_

### Maximum Dimensions:

Overall Maximum Height Available = \_\_\_\_\_

Overall Maximum Width Available = \_\_\_\_\_

Overall Maximum Depth Available = \_\_\_\_\_

**Maximum Rate of Travel:** X-Axis = \_\_\_\_\_

Y-Axis = \_\_\_\_\_

Z-Axis = \_\_\_\_\_

**Vertical Opening = \_\_\_\_\_**

**Horizontal Opening = \_\_\_\_\_**

## 3. Options

Ram Wiper (please send CAD drawing — DWG or DXF file format preferred — for wiping profile)

Ram Cover

*Note: Drawing shown on the previous page is shown with roller Face Shield. Other options, such as Gordillo® and sliding plates are also available. Contact your Gortite® representative for more options.*

▼ Please fax or e-mail the completed form to the number/address shown.