

# Motor-Driven Tank Covers

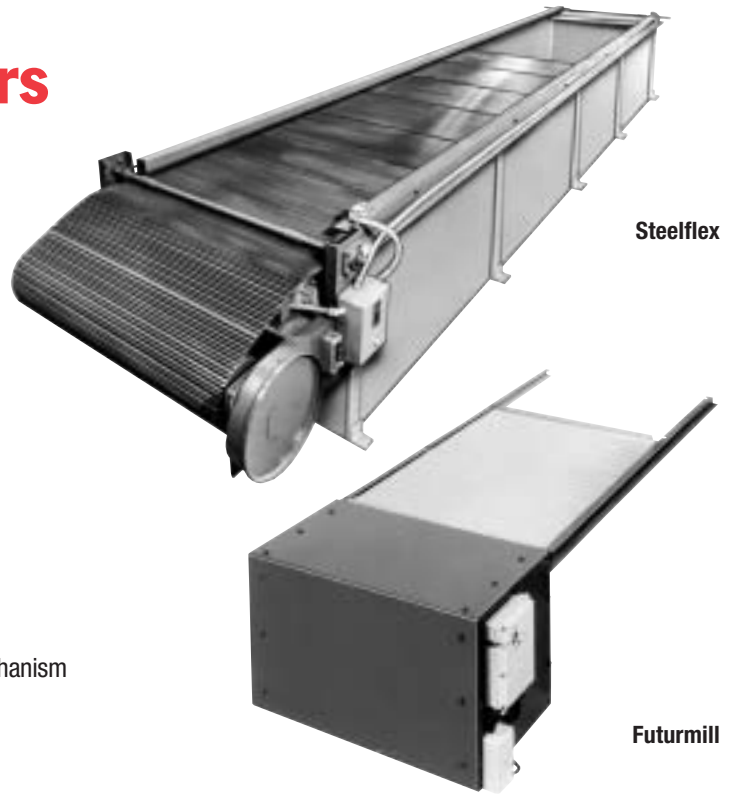
A complete system for covering chemical, degreasing, plating, painting and other types of tanks.

- Protect personnel
- Contain dangerous fumes
- Control evaporative emissions
- Prevent contamination in tank
- Compact design improves tank appearance
- Manufactured in any width or length to meet your application requirements

## Steelflex®

Continuous stainless steel top surface with aluminum or stainless steel support ribs for large tanks.

All tank covers are available with a motor drive and spring take-up mechanism featuring full electric control for forward, reverse and stop functions.



## How to Order Motor-Driven Tank Covers

Date: \_\_\_\_\_ For Quotation Only: \_\_\_\_\_ Address: \_\_\_\_\_  
 Order Number: \_\_\_\_\_  
 Company Name: \_\_\_\_\_ City: \_\_\_\_\_ State/Prov. \_\_\_\_\_  
 Contact: \_\_\_\_\_ Country: \_\_\_\_\_ Zip/Postal Code: \_\_\_\_\_  
 Quantity of covers needed: \_\_\_\_\_ Telephone: \_\_\_\_\_ Fax: \_\_\_\_\_  
 E-Mail: \_\_\_\_\_

Please supply a sketch/drawing/CAD file (DWG or DXF file format)/photo of your application

### 1. Application

Materials Used in Tank: \_\_\_\_\_

- Steelflex     Futurmill

### 2. Dimensions

Tank Width O.D. \_\_\_\_\_

Tank Length O.D. \_\_\_\_\_

Tank Width I.D. \_\_\_\_\_

Tank Length I.D. \_\_\_\_\_

Largest Unsupported Span \_\_\_\_\_

### 3. Drive System

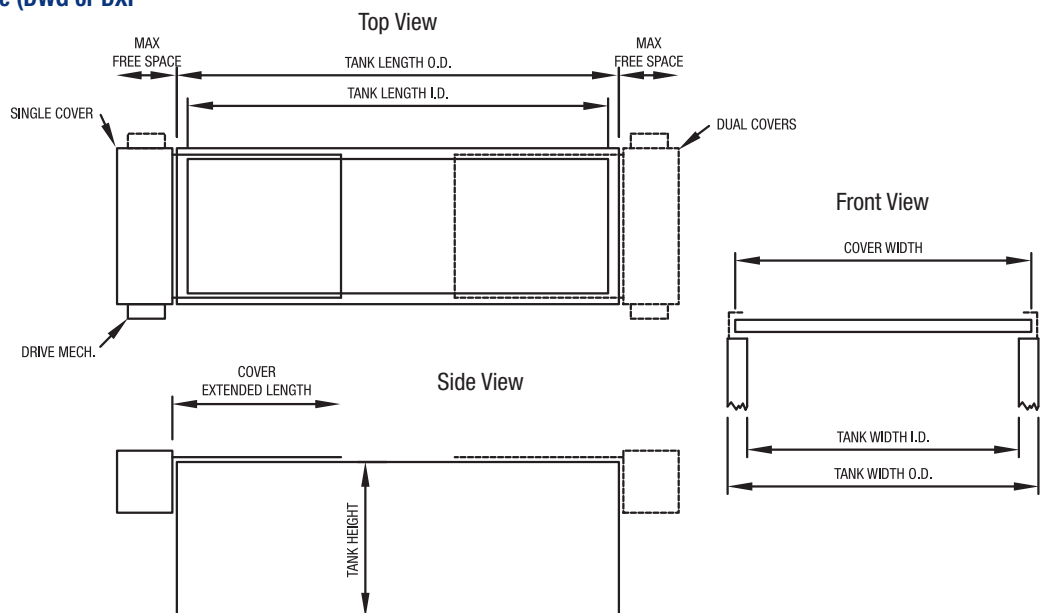
- Motor-Driven     Manual

- Travel Across Tank

- Travel Front to Back of Tank

### 4. Cover Orientation

- Double     Single     Below Tank Opening *If other than standard mounting, please send drawing/CAD file (DWG or DXF).*



▼ Please fax or e-mail the completed form to the number/address shown.